



7 Carnweather Court  
Milton Keynes, MK4 3DL



William Coulson  
Partnered With  
**Simpsons**  
Property Experts

"Set in a Prime Location with Spacious Dimensions Throughout"

This beautifully presented four-bedroom detached home enjoys a desirable position close to Tattenhoe Valley Park and Howe Park Wood. It's perfectly placed for nature walks, local cafés, and shopping centre—while still offering an easy commute to London via Milton Keynes Central or Bletchley train stations and soon the East/West rail link.

Local amenities include supermarkets, children's nurseries, primary and secondary schools, community halls, and healthcare providers making this home as practical as it is attractive.

The property boasts a welcoming and spacious entrance hall with tiled flooring, guest WC, and staircase to the first floor. A bright, stylish dual aspect living room features engineered oak flooring, French doors with attractive shutters, and a gas fireplace set in a real chimney breast creating a perfect retreat.

A standout open-plan kitchen/breakfast room overlooks the rear garden and provides a welcoming heart to the home, complete with plentiful eye and base-level units, Bosch oven, gas hob, stainless steel finishes, integrated fridge, and space for a dishwasher. The adjoining utility room mirrors the kitchen design and includes appliance space and garden access.

To the front is a flexible dining room, currently used as a study featuring oak flooring.

Upstairs, four double bedrooms are all tastefully decorated. The main bedroom offers fitted wardrobes and a sleek ensuite with underfloor heating, modern tiling, vanity unit, light-up mirror, and shaver point.

The family bathroom is equally luxurious, with a double width shower, vanity unit, heated towel rail, and coordinated wall and floor tiling.

Outside, enjoy the convenience of a detached double garage with electric door, power and lighting, plus ample private parking.

The mature south-east facing rear garden features lawn space, pergola, covered seating and gated side access.

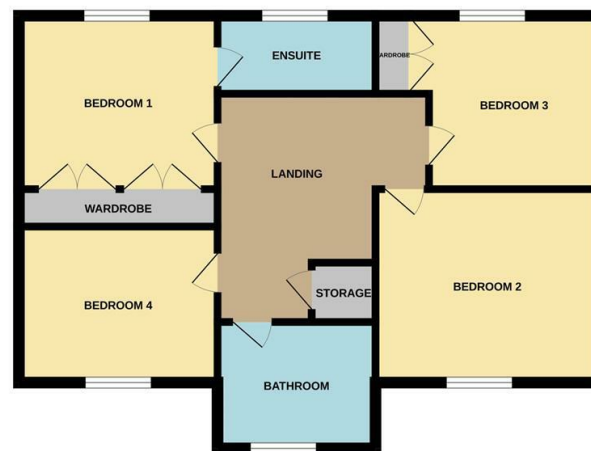
Offers over £575,000



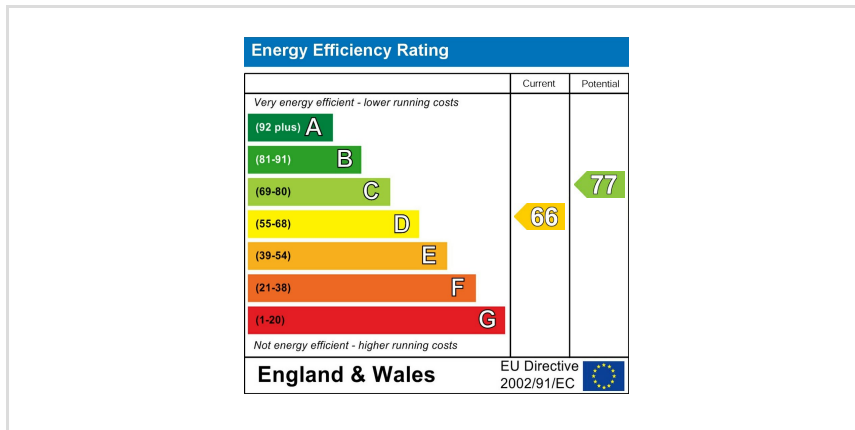
GROUND FLOOR



1ST FLOOR



Whilst every attempt has been made to ensure the accuracy of the floor plan contained here, measurements of doors, windows, rooms and any other items are approximate and no responsibility is taken for any error, omission, or mis-statement. The plan is copyright to Simpson and Partners and is for illustrative purposes and should only be used as such by any prospective purchaser. The services, systems and appliances shown have not been tested and no guarantee as to their operability can be given.  
Made with Metropix ©2025



You may download, store and use the material for your own personal use and research. You may not republish, retransmit, redistribute or otherwise make the material available to any party or make the same available on any website, online service or bulletin board of your own or of any other party or make the same available in hard copy or in any other media without the website owner's express prior written consent. The website owner's copyright must remain on all reproductions of material taken from this website.



William Coulson  
Partnered With

**Simpsons**  
Property Experts

Tel: 01908 040289

Email: [william.coulson@simpsonspropertyexperts.co.uk](mailto:william.coulson@simpsonspropertyexperts.co.uk)

Web: <https://simpsonspropertyexperts.co.uk/our-locations/milton-keynes>

